



**MMB**

**PARIS · PELION**

**MAISON VON BROCKDORFF**



LA MAISON VON BROCKDORFF  
KATHARINA VICTORIA KRIENER  
CREATIONS  
COLLECTION

- collection ROYAL DRUM
- collection WINGED FISH
- collection BLACK MIROR
- collection SEA GULL
- collection FLUTE TRAVERSE
- collection ECLAT
- collection PIANO
- collection AMPHISTA
- collection RUGS
- collection ESTEBANA



### La MAISON VON BROCKDORFF

A high-end design brand that inspires a desire for precious and unique objects, MAISON VON BROCKDORFF was established by Katharina Victoria Kriener when she decided to perpetuate the legacy of her family name, while living out her true passion for creating exceptional pieces.

This rebirth allowed the perpetuation of the family history, but also of its traditions and core values, which are nobility, beauty and uniqueness.

Her works (furniture, lighting, rugs, objects and accessories), distinguished by their quality, elegance and beauty, Made in France, those creations rely on craftsmen's expertise to make each piece unique.

Inspired by antique jewels to create contemporary pieces with pure lines and refined materials, the MAISON VON BROCKDORFF collection displays a variety of tonalities.

With more than two decades of experience as an architectural project manager, then as an interior designer and designer, Katharina has acquired a wealth of expertise and skills.

Prestigious projects such as Concert halls, opera, schools and the extension into the sea of Monaco within world renowned agencies such as Jean Nouvel, Zaha Hadid, Paul Andreu and Valode&Pistre, Katharina earned their trust, from Hamburg to London, from China to New York and from Monaco to Paris.

After such a rich experience, Katharina decided to found her own design house, named MAISON VON BROCKDORFF.

Through the creation of this Franco-German brand with a dash of Spanish influence, which embraces both those cultures - perhaps even the three of them - carrying on each of their traditions and nobleness.

Whether she designs an opera or a table, the intention is always the same: pure, flowing, elegant and timeless lines.



winged fish gold\_rug

Each collection is full of emotion; each creation carries a story.

Katharina breathes soul into each of her creations, giving a true presence and existence to the places she so obviously sublimates.

JEWELLERY  
becomes  
FURNITURE  
FURNITURE  
becomes  
JEWELLERY



Inspired by vintage jewels to create contemporary pieces  
with pure lines and precious materials

Each piece is designed with an attention to materials, which are preferably combined, pure, rich, vibrant  
and noble. Among the materials she favours are brass, bronze, alabaster, gemstones, rare wood es-  
sences, silk and pure wool.

The contemporary pieces of today become collectors' items of tomorrow

COLLECTION

— collection ROYAL DRUM



**Designation** ROYAL DRUM coffee table

**Dimensions**

XL	400 mm / 15.6" high	ø 1200 mm / 47.2"
L	400 mm / 15.6" high	ø 800 mm / 31.5"
M	450 mm / 17.6" high	ø 600 mm / 23.6"
S	500 mm / 9.6" high	ø 424 mm / 16.7"

possible compositions: solo, duo or trio

custom dimensions also available

**Materials** brass and alabaster

### When know-how meets noble materials

MAISON VON BROCKDORFF has chosen alabaster because of its wide variety of lights and patterns. Combined with brushed brass, alabaster brings warmth and a touch of preciousness to the atmosphere

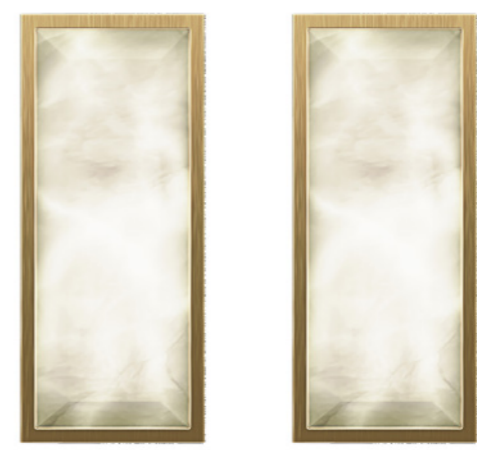
### A unique piece for a unique space

The alliance of the beauty of brass and the lively richness of alabaster results in the mutual highlight of the two materials.

*collection* \_ ROYAL DRUM



*collection* \_ ROYAL DRUM



**Designation** BAGUETTE wall lamp

**Dimensions** 500mm / 19.7" high  
200mm / 7.9" wide  
90mm / 3.5" deep

custom dimensions also available

**Materials** brass and alabaster  
**Lighting** LED warm white - 3300°K

### Purity and elegance, dedicated to light

When illuminated, alabaster radiates a delicate and vibrant light that invites to contemplation. Once placed on your wall, whether you choose one, two or even three, these wall lamps will remind you of jewels adorning your walls.

### Simplicity and serenity are its strength

The simplicity of the BAGUETTE wall lamp is its strength. It provides the lamp with a calm and serene presence. Its geometrical, clean shape emerges like a diamond, casting a soft and silky light.

*collection* \_ BAGUETTE

Once placed on your wall, whether you choose one, two or even three, these wall lamps will remind you of jewels adorning your walls.

The lamp will look especially great when associated with other creations from the BAGUETTE collection, such as the coffee tables.

*collection* \_ BAGUETTE



### WINGED FISH plays with our imagination

Reinvented during the creation of this lamp, this winged fish can easily be imagined, free to fly wherever its desires, whether on land or toward the unknown...

### An extraordinary and captivating lamp

Delicately shaped as a sphere, it gives an impression of ease and lightness. With its airy and golden aspect, this timeless piece can be compared to an artwork or almost to a precious jewel.

*collection \_ WINGED FISH*



**Designation** WINGED FISH table lamp

**Dimensions** sphere ø 250mm / 9.8"  
total height 415mm / 16.1"

custom dimensions also available

**Materials** brass and alabaster  
**Lighting** LED warm white 3300°K

*collection \_ WINGED FISH*



VALUES



— collection BLACK MIRROR





**Designation** BLACK MIRROR oval coffee table

**Dimensions** 300mm / 11.8" high  
1200mm / 47.2" long  
600mm / 23.6" wide

custom dimensions also available

**Materials** brass and obsidian

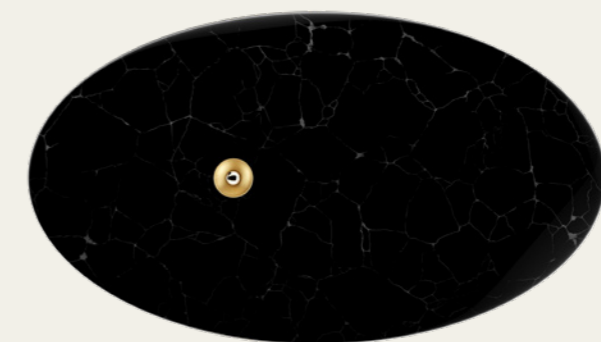
### A coffee table imagined as a jewel

A wavy line, giving an impression of movement, circles the obsidian stone.  
The brushed and polished surface is reminiscent of gold, creating a strong contrast with the deep black and powerful obsidian.

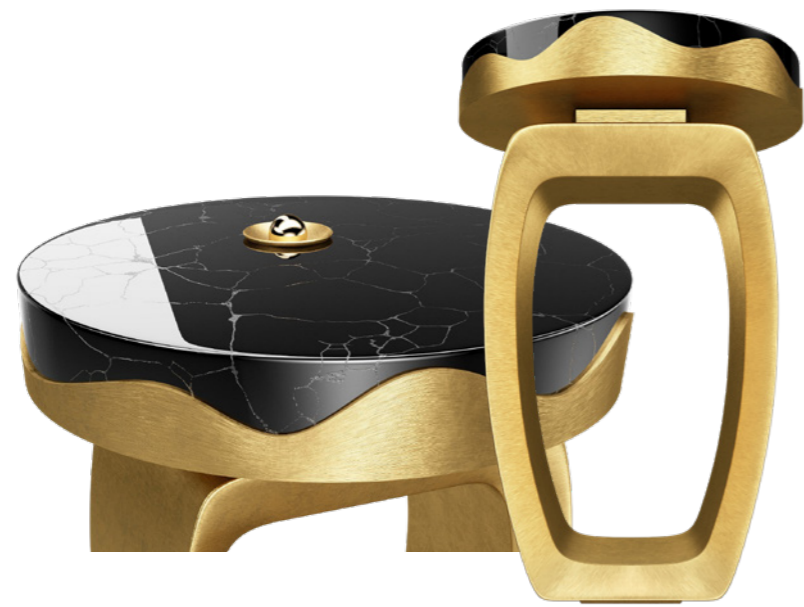
The beauty of the materials is the main focus

A rare and lustrous pearl delicately embedded in an eccentric hemisphere in stone can reflect its surroundings.

*collection* \_ BLACK MIRROR



*collection* \_ BLACK MIRROR



**Designation** BLACK MIRROR coffee tables

**Dimensions** M 420mm / 16.5" high ø 510mm / 20.1"  
S 560mm / 22" high ø 390mm / 15.4"

custom dimensions also available

**Materials** brass and obsidian



*collection* \_ BLACK MIRROR



— collection SEA GULL



**Designation** SEA GULL console table

**Dimensions** 800 mm / 31.5" high  
1400 mm / 55.1" long  
360 mm / 14.2" wide

custom dimensions also available

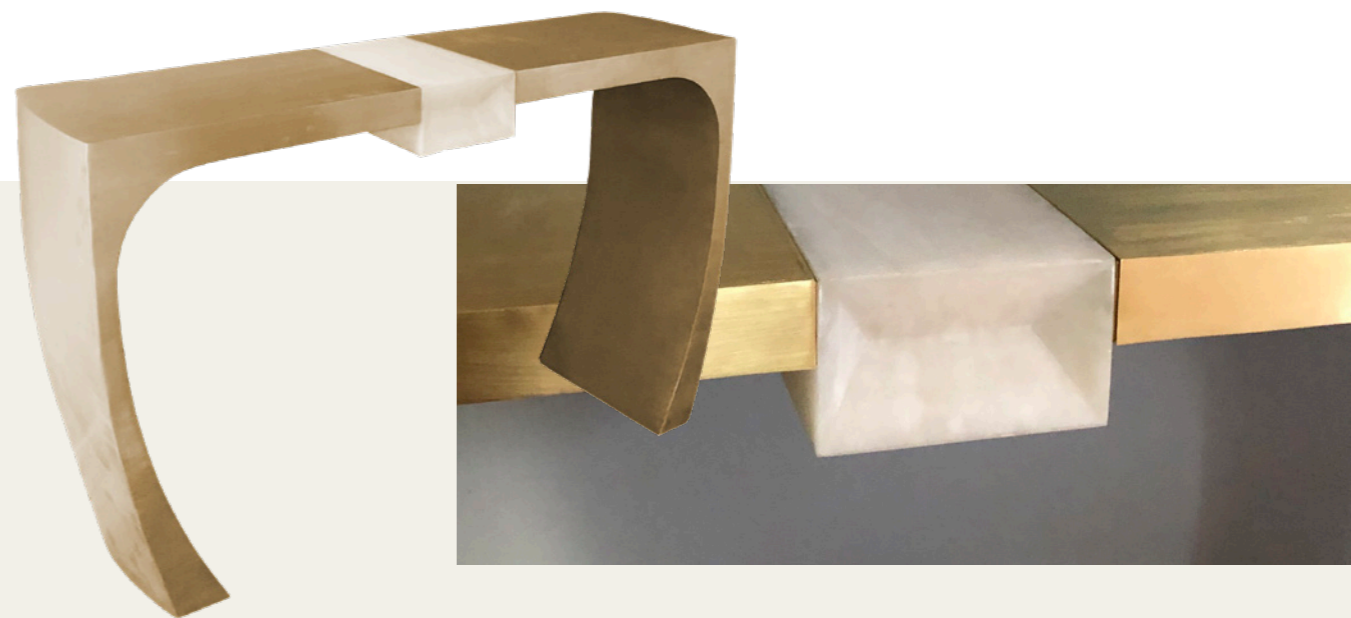
**Materials** brass and alabaster

**This console table is more than a jewel, it truly is a sea gull !**

The legs and top of this modern and elegant console table are fused in one piece, and therefore displaying daring and contemporary lines. A piece of alabaster is embedded in the centre of the table top.

**A classical, modern and simply timeless piece**

With this console table, jewellery now takes its place in your interior. With its luminous and golden appearance, brass symbolises gold, in all its purity and radiance.



*collection \_ SEA GULL*

*collection \_ SEA GULL*



DESIRE



— collection FLUTE TRAVERSE



**Designation** FLUTE TRAVERSE chandelier

**Dimensions** Three rod sizes:  
860, 1100 ou 1300 mm / 33.9", 43.3" or 51.2"  
Spheres' diameters:  
60, 90, 120 ou 150 mm / 2.4", 3.5", 4.7" or 5.9"

custom dimensions also available

**Materials** brass and alabaster

**Lighting** LED warm white 3300°K

### Poetic musicality, simplicity and clean lines

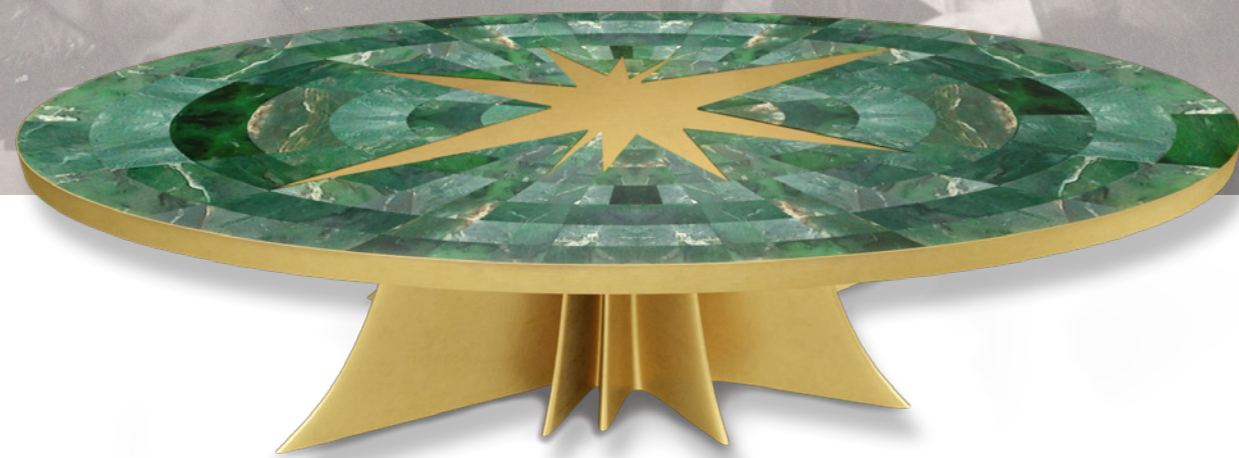
This majestic chandelier FLUTE TRAVERSE is directly inspired by this instrument and embodies the beauty of its sound.

The chandelier is composed of transverse rods, which ends are carefully hand crafted, as if they were to make the sound infinitely vibrate. From these tips come luminous spheres, just as the sound comes out of the flute.

The different sized spheres, are inconsistently carved in various materials, to symbolize the many variations of music.

*collection* \_ FLUTE TRAVERSE

*collection* \_ FLUTE TRAVERSE



## — collection ECLAT

Pure lines like a folded sun in motion, borrowed from haute couture

A true extension of the pattern of the top, also in the shape of a star, the base seems to cross the material to fully embrace it and develop its shape under the table, folded in pleats.

A contrasting and luxurious work of art

With its colors, from light green to dark green, the refined jadeite jade stone is the symbol of purity, strength but also wisdom.

*collection \_ ECLAT*



**Designation** ECLAT, dining table

**Dimensions** 750 mm / 29.5" high  
2550 mm / 100.4" long  
1050 mm / 41.3" wide

custom dimensions also available

**Materials** brass and jade jadeite



**Designation** ECLAT, oval coffee table

**Dimensions** 400 mm / 15.7" high  
1604 mm / 63.1" long  
704 mm / 27.7" wide

custom dimensions also available

**Materials** brass and jade jadeite



*collection \_ ECLAT*



*collection \_ ECLAT*



— collection PIANO



Did you know that Arthur Rubinstein said :  
“ Put yourself at your piano as you sit down at the table.”

*collection \_ PIANO*





**Designation** PIANO, oval coffee table

**Dimensions** 400 mm / 15.7" high  
1200 mm / 47.2" long  
600 mm / 23.6" wide

custom dimensions also available

**Materials** brass

## Motion, borrowed from music & haute couture

‘As the table top I imagined a free variation of a piano, of piano keys. Underneath two ribbons crossing and crossing again. It’s all about movement und fluid lines, everything is there: music, dance, fashion and elegance.’

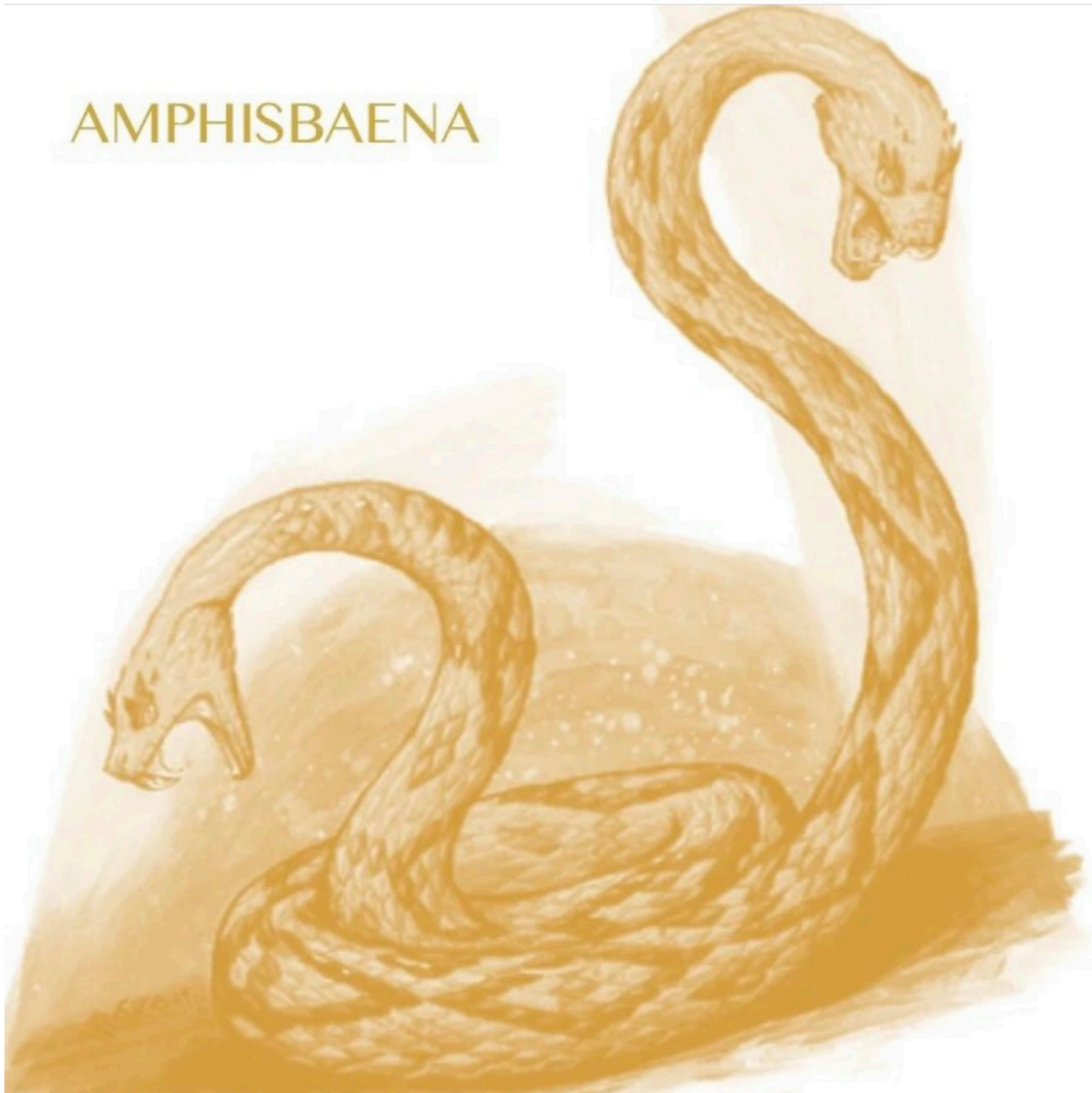
KATHARINA VICTORIA KRIENER

A contrasting and luxurious work of art

*collection \_ PIANO*

*collection \_ PIANO*

AMPHISBAENA

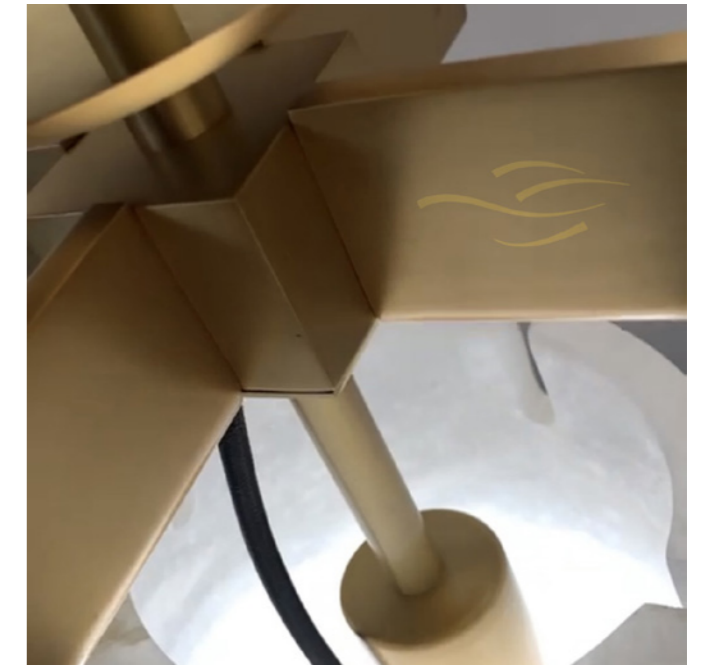


AMPHISTA \_ table lamp collection  
alabaster, brass & fabric

Amphisbaena/ Amphista It is a mythical serpent with a head at each end.  
A combination of the words amphis- 'both ways' and bainien- 'to go,' implying that it can slither both forward and backward.

— collection AMPHISTA

*collection* \_ AMPHISTA



**Designation** AMPHISTA \_ table lamp collection

**Dimensions** alabaster base : 420 mm / 16.5" high  
 200 mm / 7.9" wide  
 Lampshade : 250 mm / 9.8" high  
 450 mm / 17.7" diameter

**Materials** custom dimensions also available  
 alabaster, brass & fabric

Amphista is a new creation, a table lamp that either shines its light both up and down or just up or down; this lamp is created to have a glowing base of translucent alabaster and a textured lampshade. Two different materials, two different lights. The design is inspired by old Egyptian lamps and vases and redesigned to modernize and purify the traditional lines of design. The brass cross is embedded into the alabaster to hold the two sources of light.

*collection \_ AMPHISTA*

*collection \_ AMPHISTA*



royal drum \_ coffee table \_ L



royal drum \_ coffee table \_ M



royal drum \_ coffee table \_ S



piano \_ coffee table



bagette \_ wall lamp



winged fish \_ table lamp



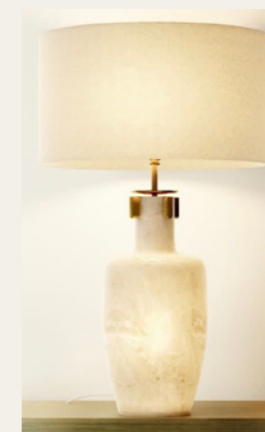
sea gull \_ console



flute traverse \_ chandelier



amphista 1 \_ table lamp



amphista 2 \_ table lamp



black mirror \_ oval coffee table



black mirror \_ coffee table S



black mirror \_ coffee table M



eclat \_ dining table



eclat \_ coffee table

COLLECTION

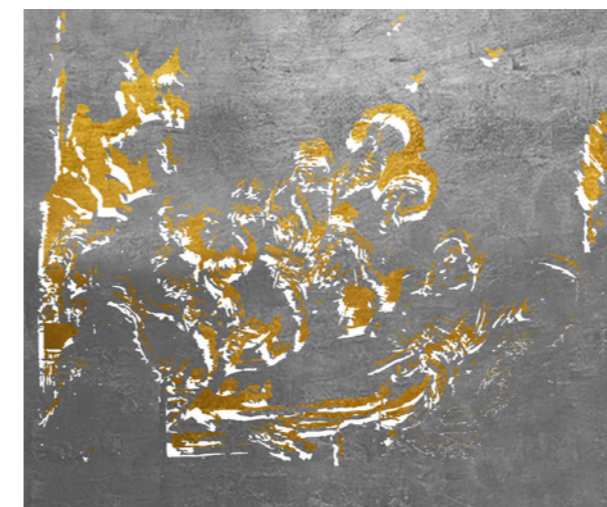
COLLECTION



Schneewittchen / Snow white



Aschenputtel / Cinderella



Schneewittchen \_ silber / Snow white \_ silver

**Designation** FAIRY TALES rug

**Dimensions** 2.5 m x 2.5 m (8.2ft x 8.2ft)  
3.0 m x 3.0 m (9.8ft x 9.8ft)

custom dimensions also available

**Materials** wool and silk threads, or art silk  
hand-knotted or hand-tufted

By interweaving tradition and contemporary design, the rug itself becomes a piece of art

As a central element of an interior, carpeting can also underline and highlight aestheticism. With it comes a sense of absolute precision: a particular attention to detail, woven in a combination of colours and subtle curves.

Each creation is hand-knotted or hand-tufted

A variety of noble and beautiful materials are offered, such as wool and silk or art silk; these natural materials bring life to your floors and walls, through a wonderful interplay of light and shade.

*collection \_ RUGS*

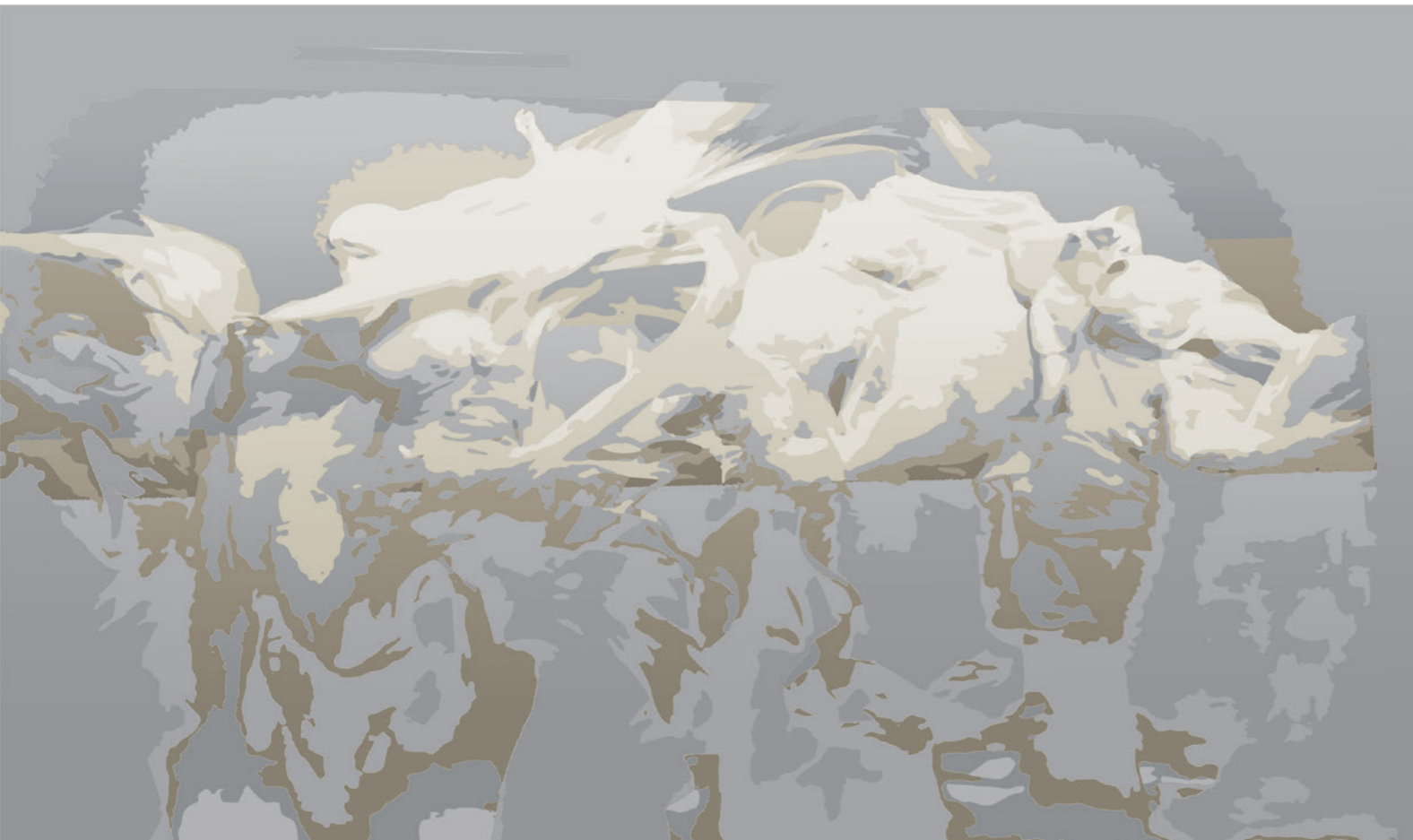
Inspired by paintings of Roland Risse

The rugs from the FAIRY TALES collection create a link between past and present through their patterns and modernity.

The collection offers luxurious interpretations of these tales

The drawings have been modernized, by reducing the colours and simplifying the design, without losing any beauty or any magic from the original piece.

*collection \_ FAIRY TALES*



Dance grey

**Designation** Danse rug

**Dimensions** 2.5 m x 2.5 m (8.2ft x 8.2ft)  
3.0 m x 3.0 m (9.8ft x 9.8ft)  
4.0 m x 2.3 m (13.1ft x 6.5ft)  
4.0 m x 3.0 m (13.1ft x 9.8ft)

custom dimensions also available

**Materials** wool and silk threads, or art silk  
hand-knotted or hand-tufted



Dance \_ grey, square



Dance \_ grey, mirrors



Dance blue

## Fascination for modern dance.

The DANCE rug collection represents a dialog between movement, artistic design and colour play. A pure interpretation of life, each rug from this passionate collection transports you into an enchanting dynamic universe.

### Prestigious hand-woven rugs

Movement, combined with a variety of colours, was the main inspiration for these very contemporary creations. The end result is a new interpretation of movement and dance, giving each piece a truly artistic dimension.

*collection* \_ DANCE



Dance gold



Dance sable



Winged fish \_ GOLD



Winged fish \_ SILVER



Winged fish \_ BLUE

**Designation** WINGED FISH rug

**Dimensions** ø 2.5 m / 8.2ft  
ø 3.0 m / 9.8ft

custom dimensions also available

**Materials** wool and silk threads, or art silk  
hand-knotted or hand-tufted

### Symbolizes movement and the freedom of flight

Winged FISH COLLECTION rug bridges shapes, materials, worlds and dreams. As an extension of family history, they are an invitation to an imaginary journey into the excellence of creation.

### Excellent artist serving the design

These floor and wall rugs are directly inspired by the von Brockdorff family crest, the winged fish. This fairy tale creature can be interpreted in many different ways, for example as a symbol of power, beauty and dream. The pattern is just a pretense to create a timeless piece and escape from reality.

*collection* \_ WINGED FISH



Would you like more information about one of our creations?

[mvb@mvbparis.com](mailto:mvb@mvbparis.com)

**Galerie des Lyons \_ PARIS**

9 rue de Beaune  
75007 Paris  
France

**Galerie / Museum \_ PELION**

Museum Kostas Liapis  
37300 Agios Georgios Nilias  
Greece

You can find our collection in our galleries and:

[www.mvbparis.com](http://www.mvbparis.com)

Instagram: @mvbparis



**MMB**

PARIS · PELION

MAISON VON BROCKDORFF

Each piece is unique

MAISON VON BROCKDORFF provides a certificate of authenticity.

Handmade in France / EU  
Limited series edition

Prices and delivery times on request

**TIMELESS**